

Enge Saal

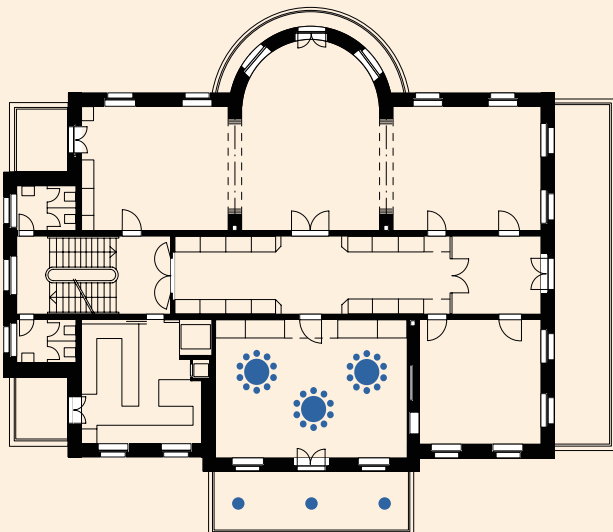
Factsheet

Seite 1/3

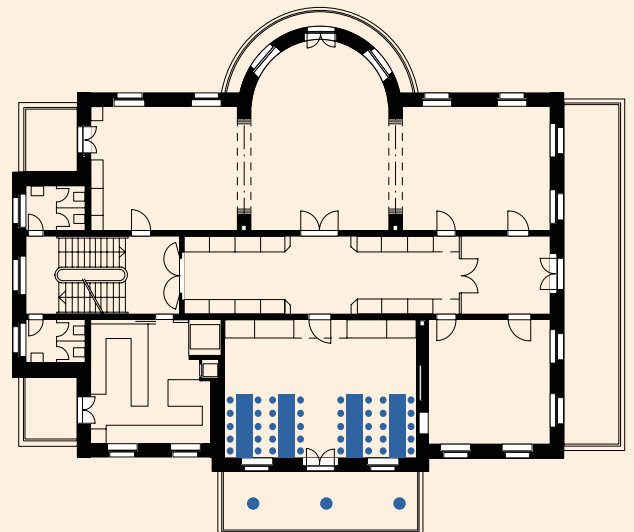


Geschoss:	1. Obergeschoss
Fläche:	52.7 m2
Maximale Kapazität:	60 Personen
Bestuhlungsarten:	Gala, Bankett, Blocktisch, Seminar Theater, U-Form, Stehtische

Gala: 24 Personen



Bankett: 32 Personen

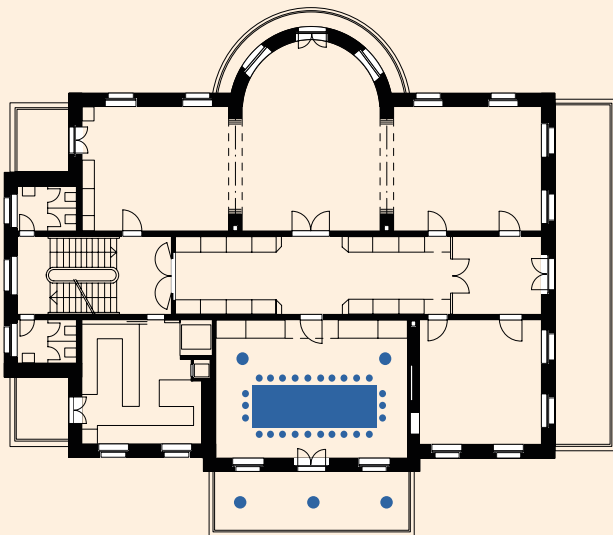


Enge Saal

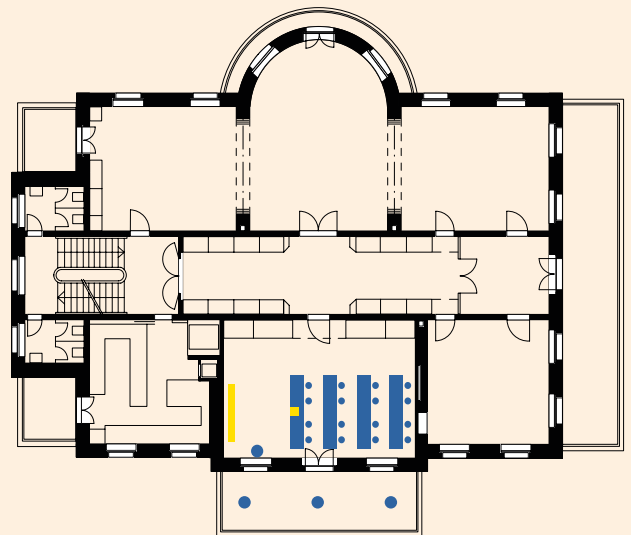
Factsheet

Seite 2/3

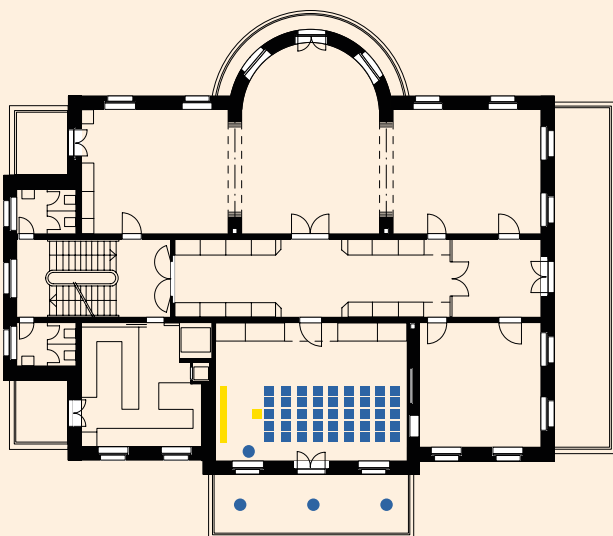
Blocktisch: 26 Personen



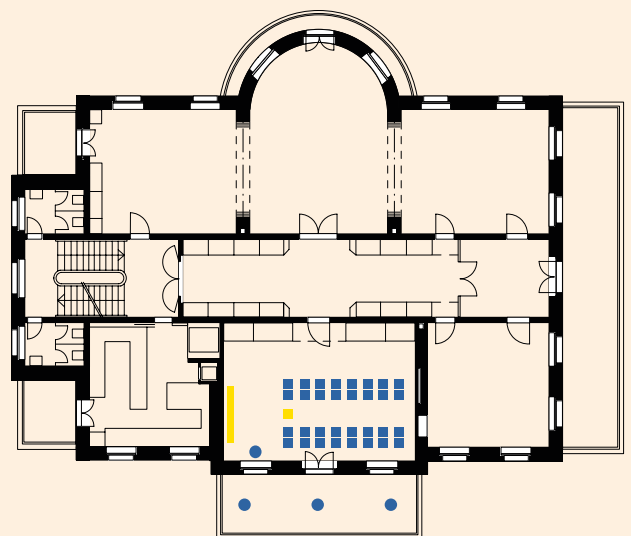
Seminar: 16 Personen



Theater: 40 Personen



Theater: 32 Personen

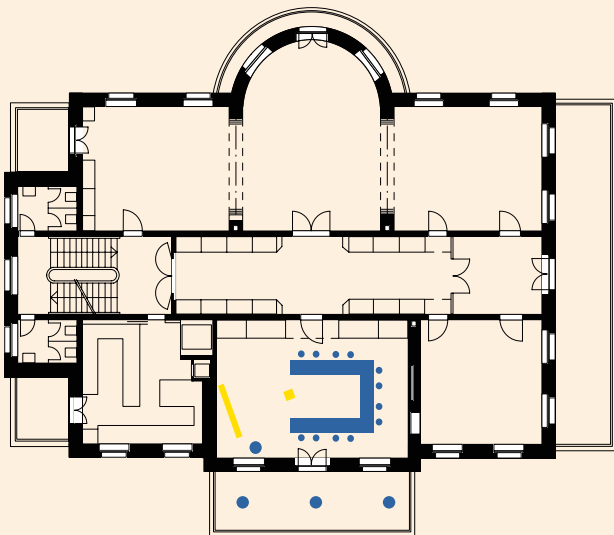


Enge Saal

Factsheet

Seite 3/3

U-Form: 12 Personen



Stehische: 60 Personen

